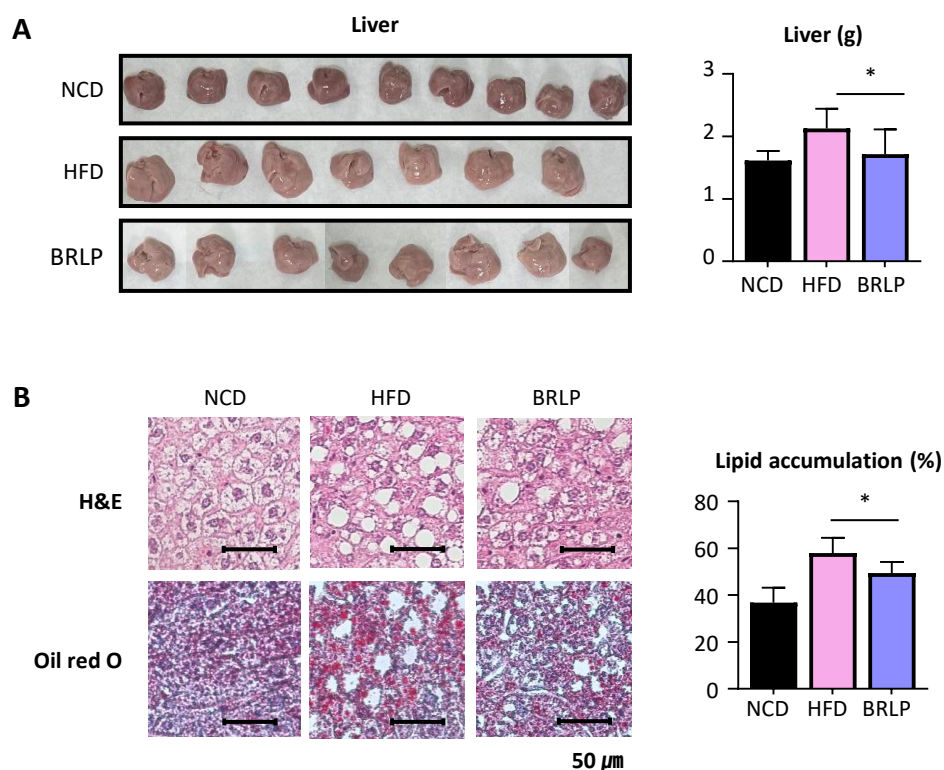


Fig. S1



**Fig. S1.** (A) The representative images and weight of liver tissue of experimental animal models. Significantly decreased liver weight in the BRLP group compared to the HFD group. (B) H&E and Oil red O staining of liver tissue. Decreased lipid accumulation in liver tissue in the BRLP group compared to the HFD group. Data are presented as Mean  $\pm$  SD. \*  $p < 0.05$ .